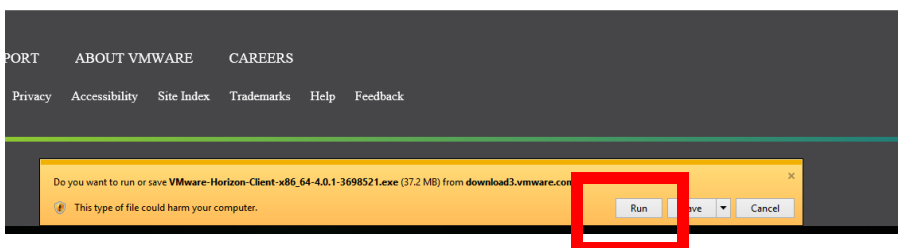
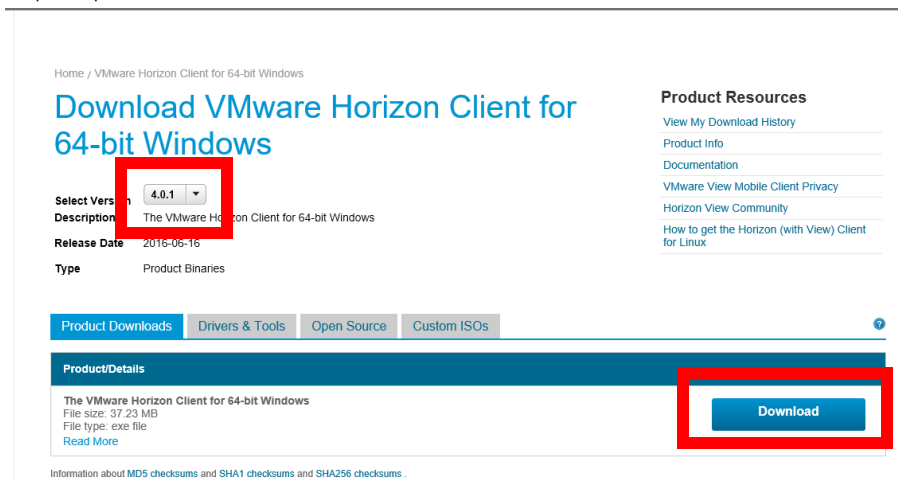


Installation of VMware View Client Windows 7/8/10

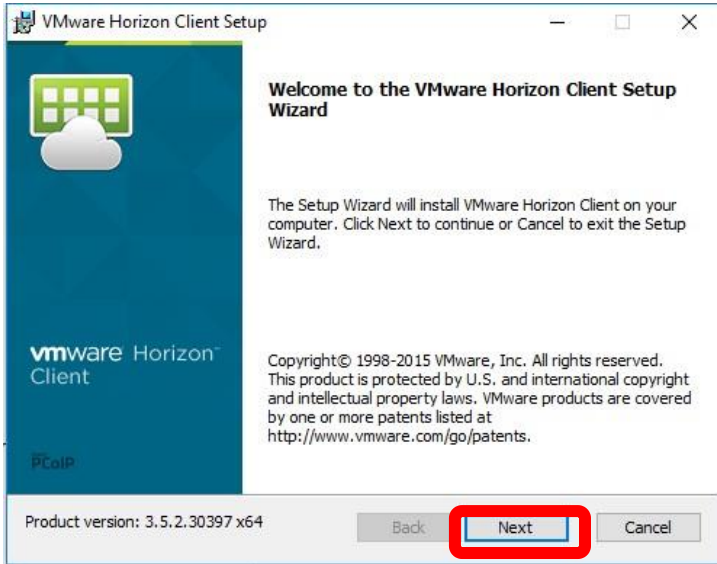
Installation VMware View Client

Now that the previous version of VMware View client has been removed from the Windows 7 workstation. The current version can now be installed. To do so follow the step by step instructions.

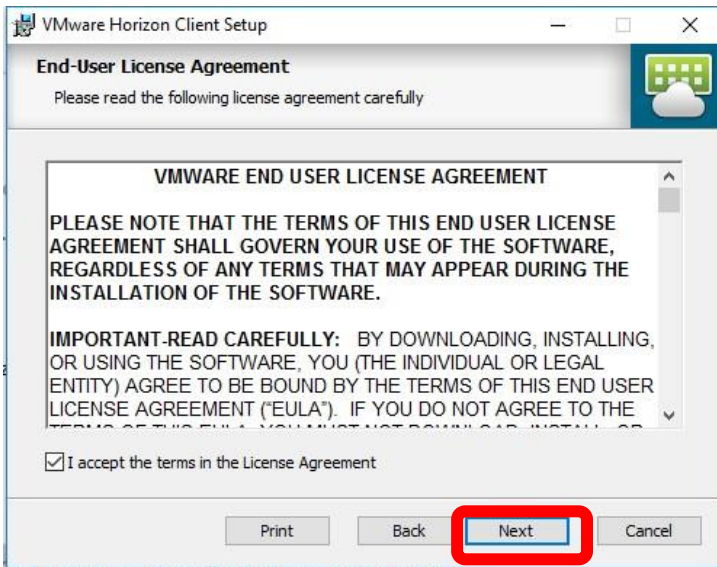
- 1) To begin the installation click the appropriate client for your PC either 32-bit windows or 64-bit windows:
 - a. For **32-bit Windows** or in a web browser copy and paste this in the address bar
 - b. https://my.vmware.com/web/vmware/details?productId=578&rPId=12719&downloadGroup=CART16Q1_2_LIN32_401
 - c. For **64-bit Windows** or in a web browser copy and paste this in the address bar
 - d. https://my.vmware.com/web/vmware/details?productId=578&rPId=12717&downloadGroup=CART16Q1_2_WIN64_401
- 2) On the next webpage click on the **Download** button. At the bottom of the webpage you may be prompted to run or save, click on the **Run** button.



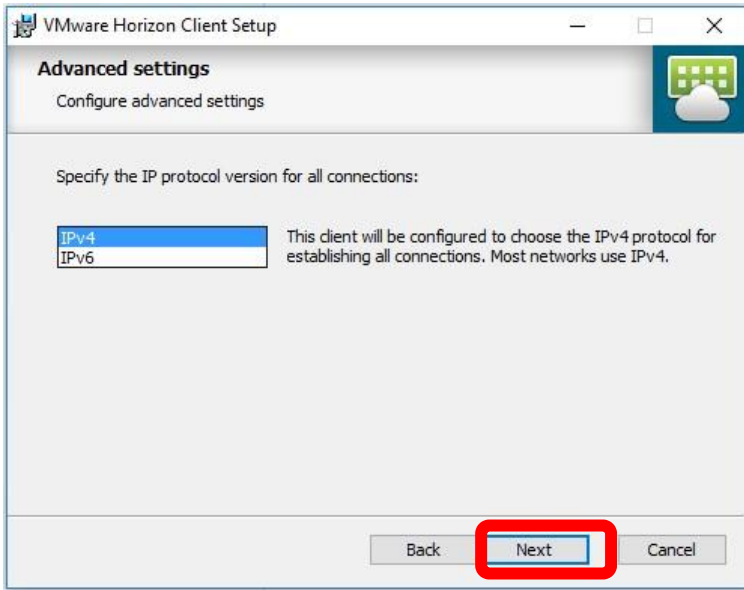
- 3) Once the download is complete the installation will begin. Click on the **Next** button.



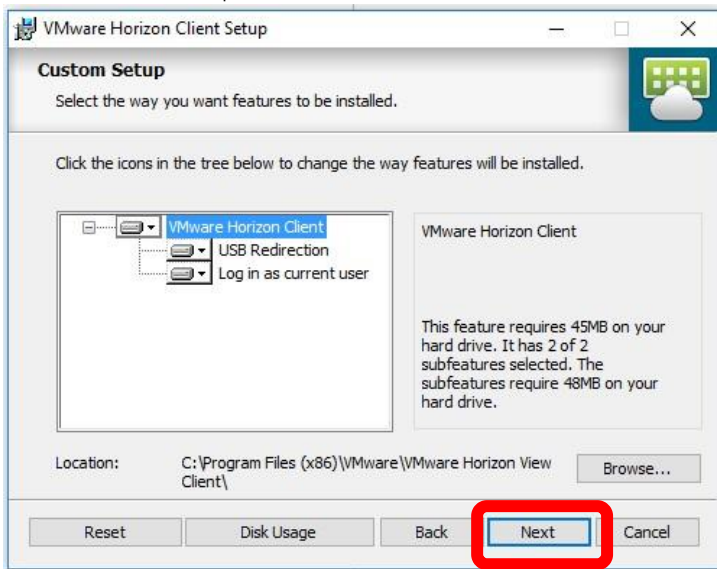
- 4) On the License Agreement then select the option "I accept the terms in the license agreement" and click the **Next** button



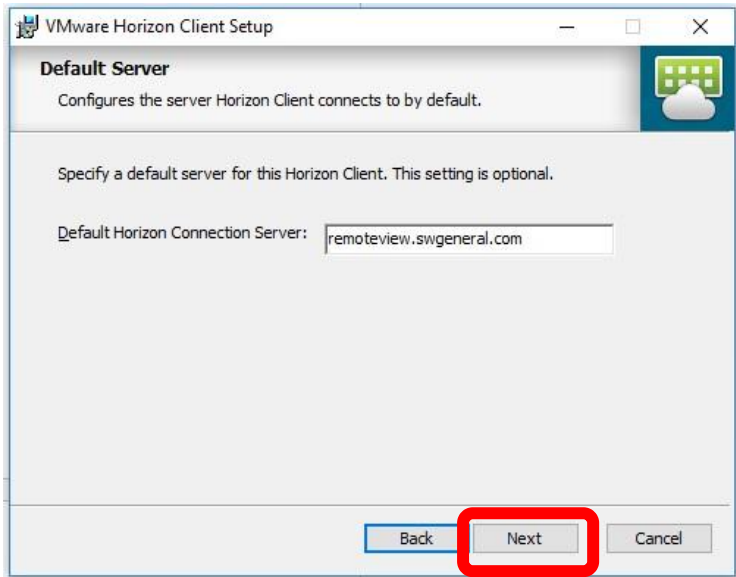
- 5) On Advanced settings click next



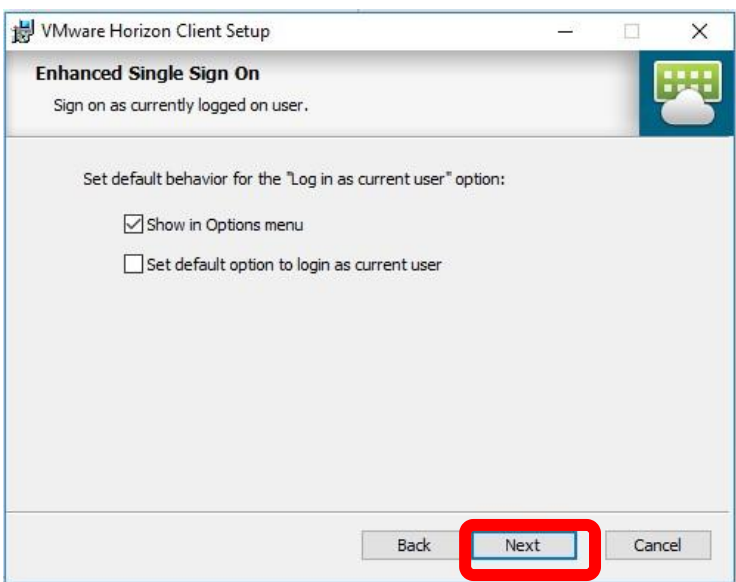
6) On the Custom Setup window click the **Next** button



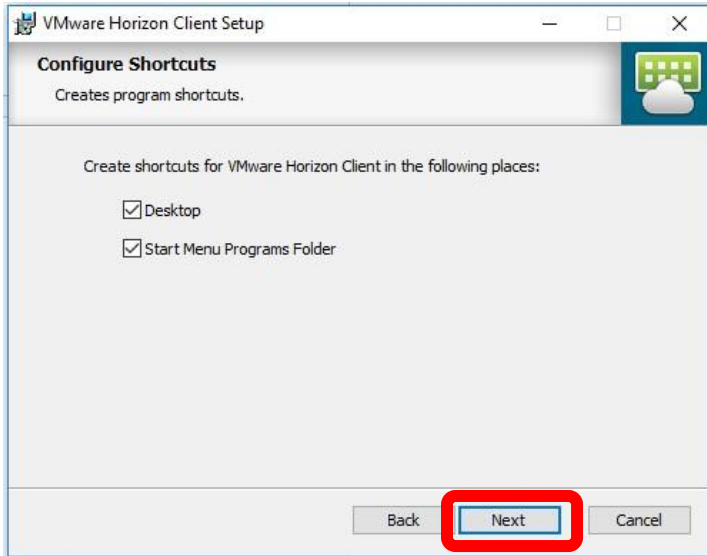
7) On the Default Server window enter **remoteview.swgeneral.com** and click on the **Next** button



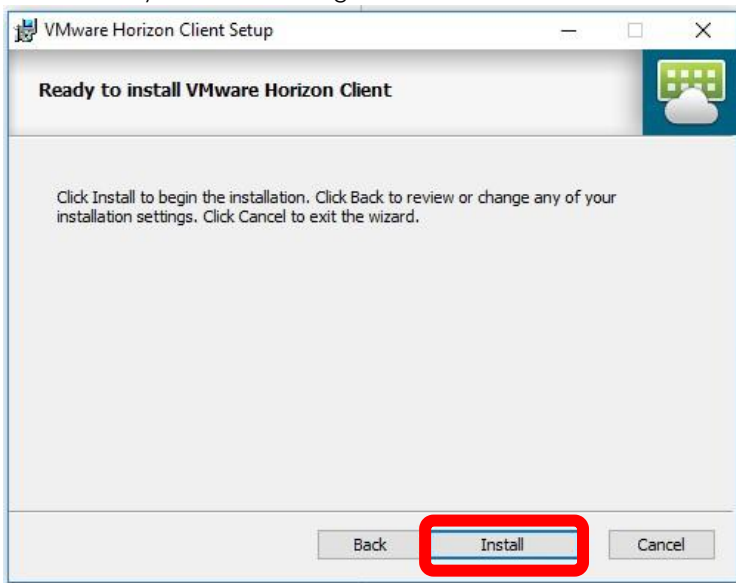
8) On the Enhanced Single Sign On window click the **Next** button.



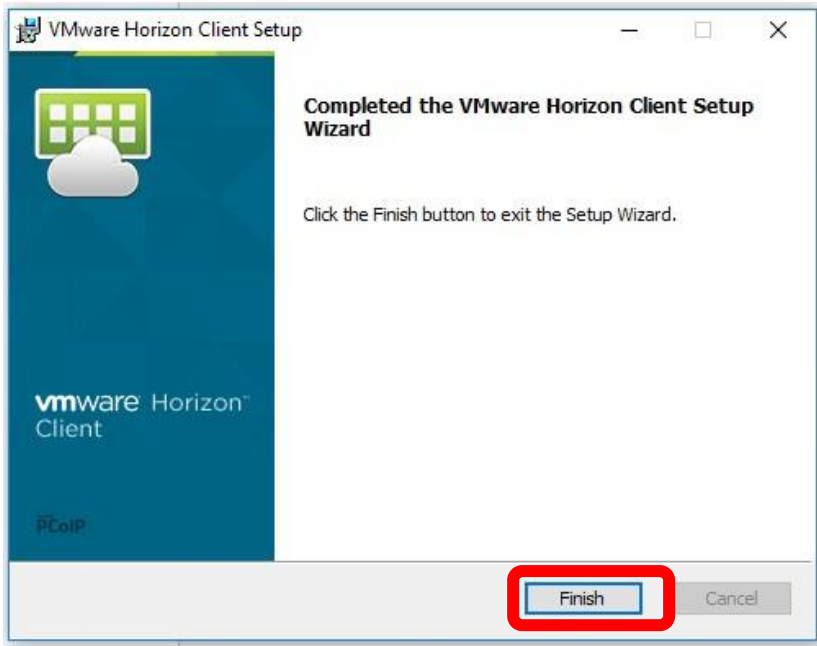
9) On the Configure Shortcuts window click the **Next** button.



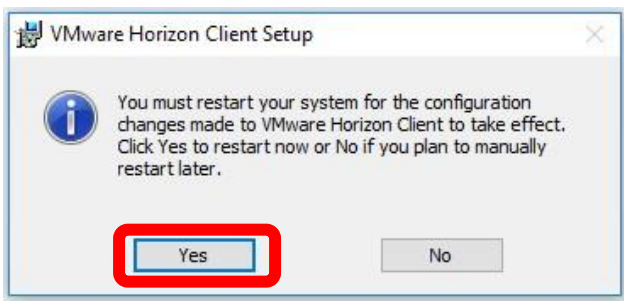
10) On the Ready to install the Program window click on the **Install** button.



11) Once the installation is complete click the **Finish** button.



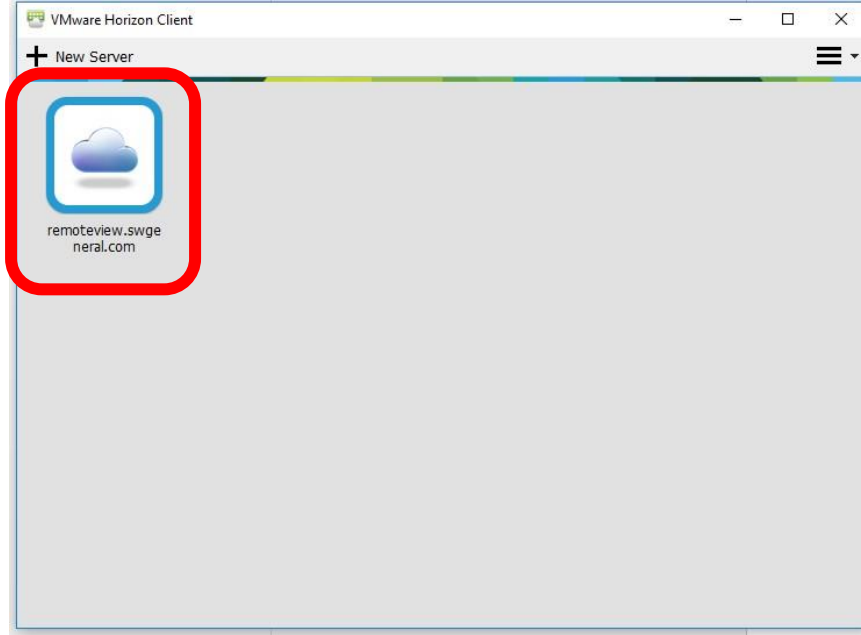
12) You will then be prompted to reboot click **Yes** to reboot your computer.



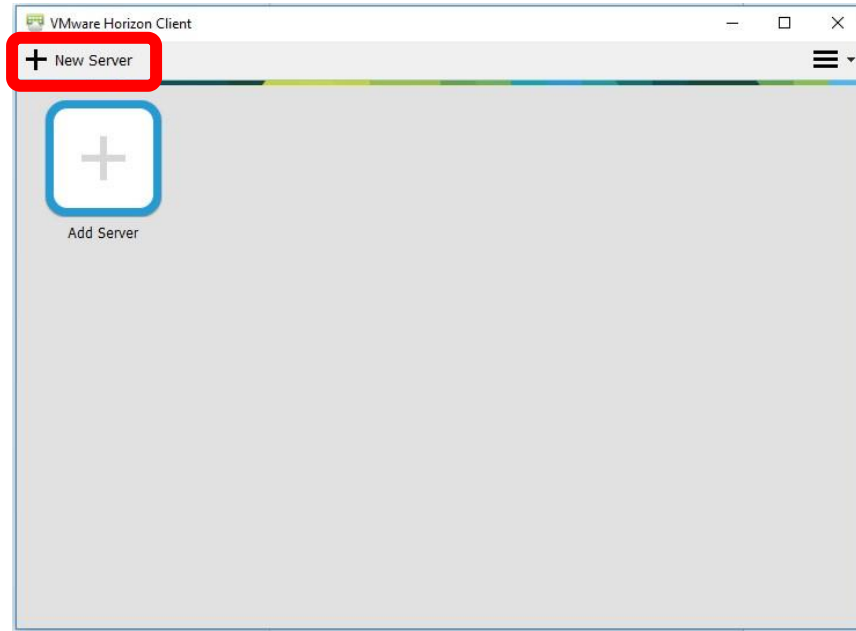
13) After your computer has rebooted the VMware View Client icon will now be on your desktop.



- 14) Make sure that the Connection server has an entry of **remoteview.swgeneral.com** and Double Click **Icon**

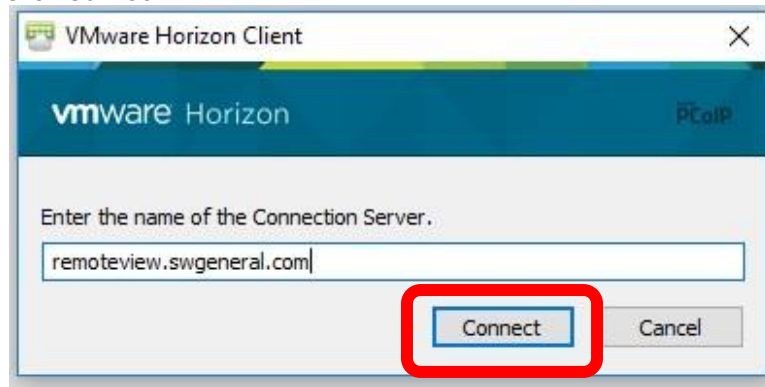


If not click +New Server

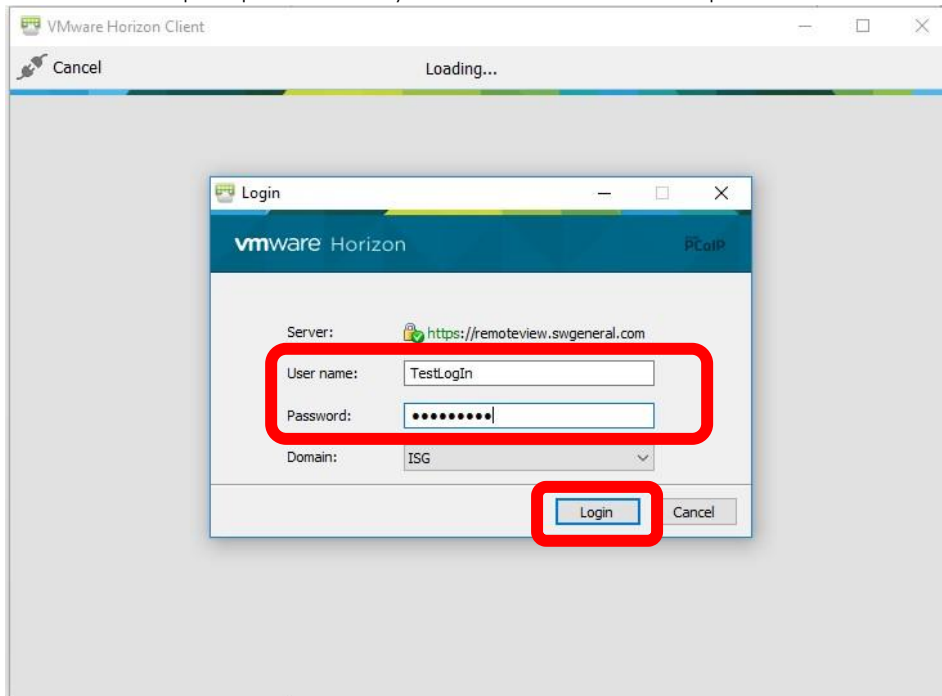


Type in **remoteview.swgeneral.com**

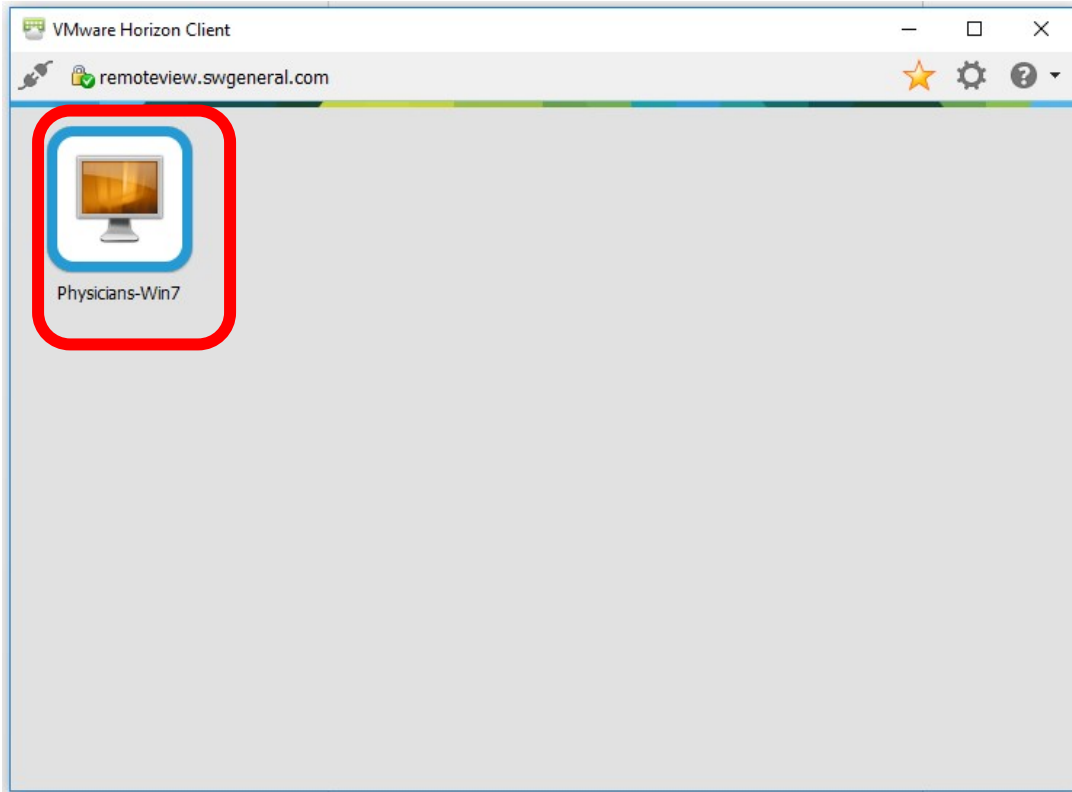
Click Connect



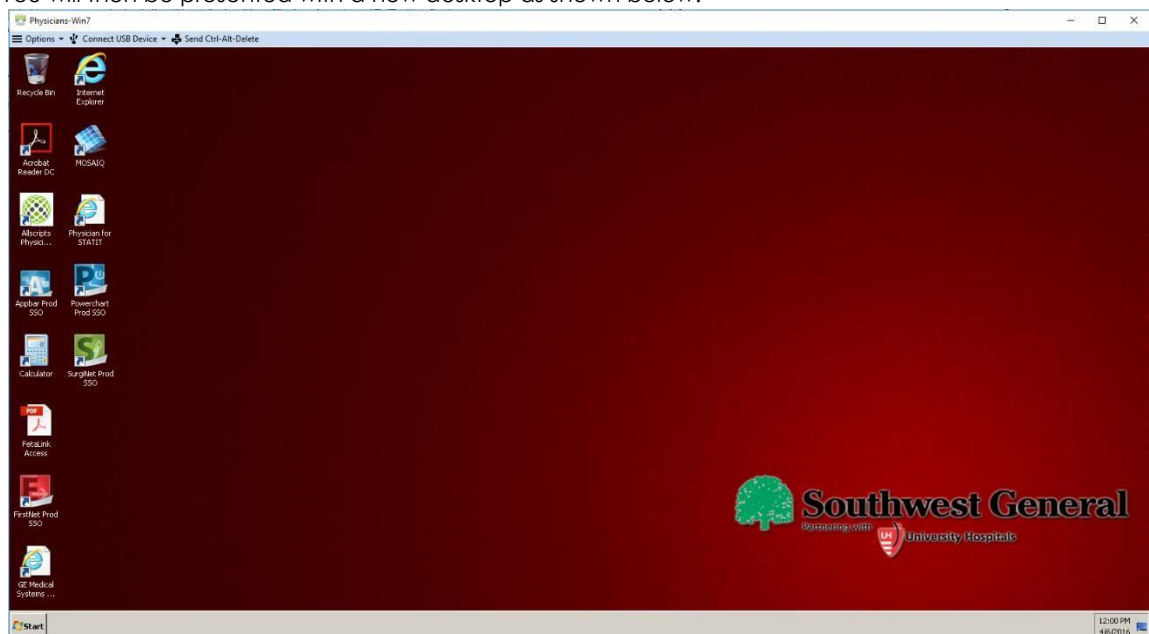
15) You will then be prompted to enter your network username and password then click **Login**



16) clicking login you will then be presented with a list of desktops, double click on **Physician-Win7** to launch the desktop



17) You will then be presented with a new desktop as shown below:



18) When finished Click Options and choose Disconnect and log off from drop down.

